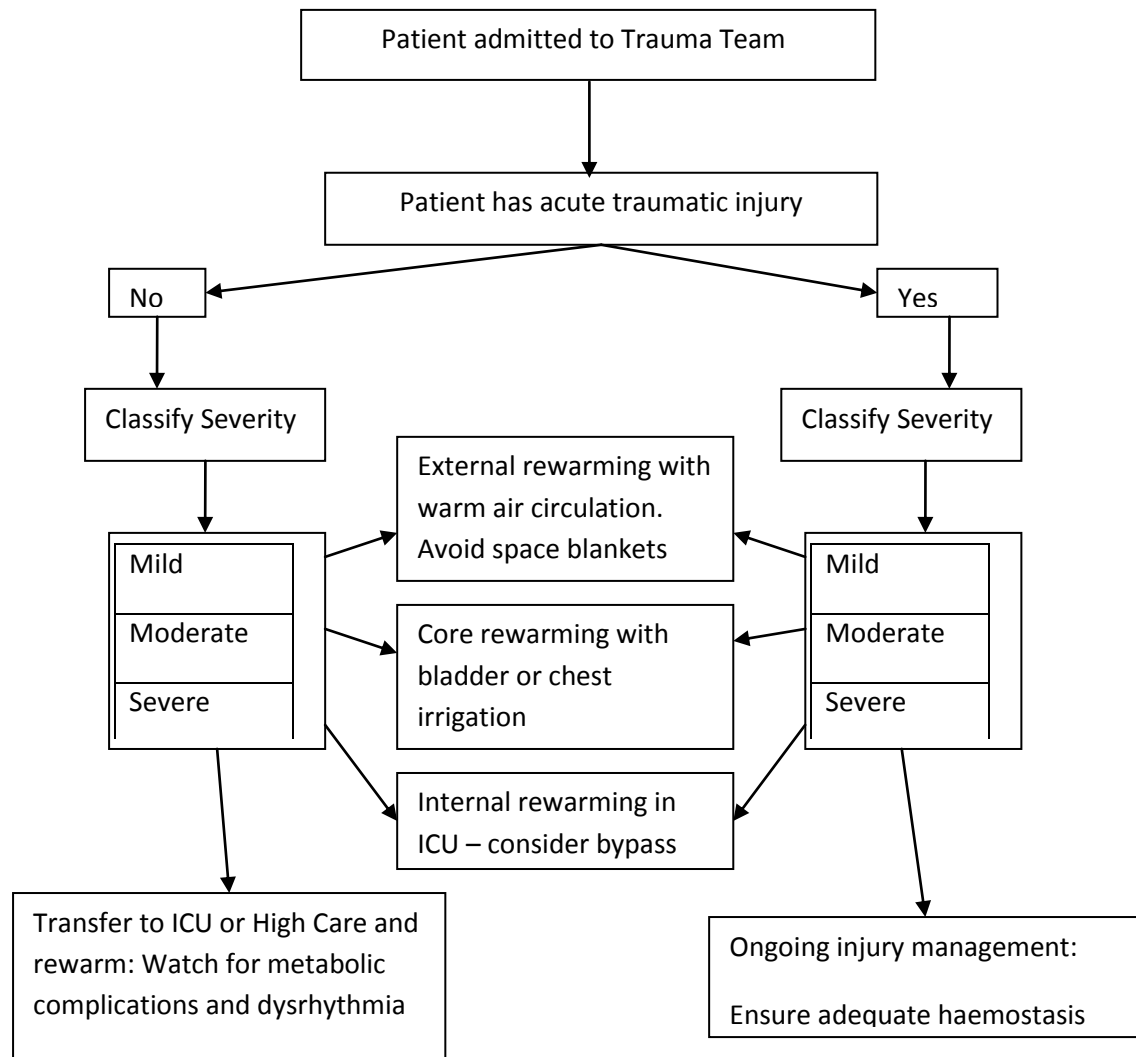




## The Management of Hypothermia



Severity of Hypothermia*	Non-traumatic	Traumatic
Mild	35 – 32 degree C	36 – 34 degree C
Moderate	32 – 30 degree C	34 – 32 degree C
Severe	Below 30 degree C	Below 32 degree C

\*ATLS Manual 8<sup>th</sup> Edition pg 221